

# IP/IPX Series Backplane

**Supports PCI and ISA slot on one backplane!**  
**For half-size PCISA series single board computers**

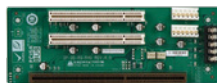
The advantages of using the PCISA card are numerous:

1. Supports standard PISA version 1.0 slot on the IP/IPX series passive backplane.
2. Compatible with all available PCI/ISA cards. IP/IPX backplane is also integrated with the PCISA series card slot.

## Selection Guide

 PAC series wall-mount chassis     4U rack-mount chassis

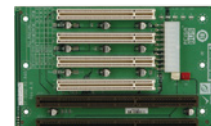
RoHS Ready



RoHS Ready

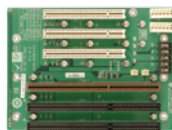


RoHS Ready

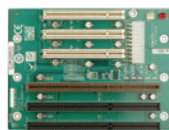


Model	IP-3S-RS	IP-4S-RS	IP-5SA2-RS
Total Slot	3	4	5
PCI Slot	2	3	4
ISA Slot			
PSU Type	AT	AT	ATX
Chassis	PAC-53GH	N/A	PR-1500G

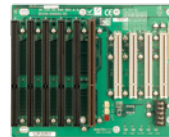
RoHS Ready



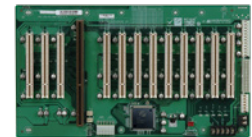
RoHS Ready



RoHS Ready

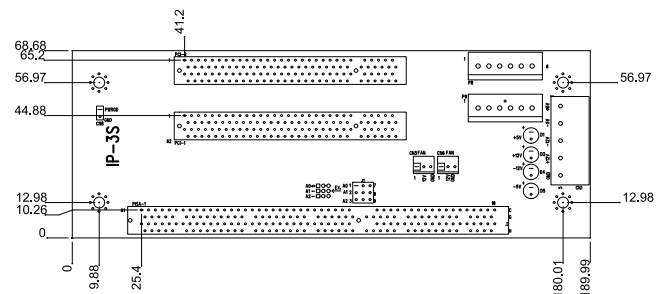
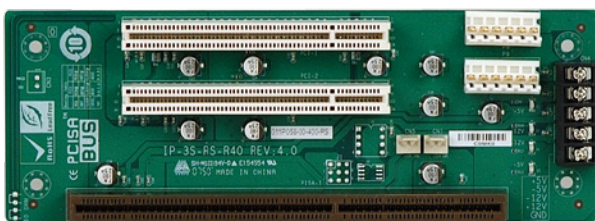


RoHS Ready



Model	IP-6S-RS	IP-6SA-RS	IP-10S-RS	IPX-13S-RS
Total Slot	6	6	10	13
PCI Slot	3	3	4	12
ISA Slot	2	2	5	
PSU Type	AT	ATX	ATX/AT	ATX/AT
Chassis	PAC-1000G	PAC-106G PAC-1000G	PAC-125G	RACK-305G RACK-360G RACK-3000G

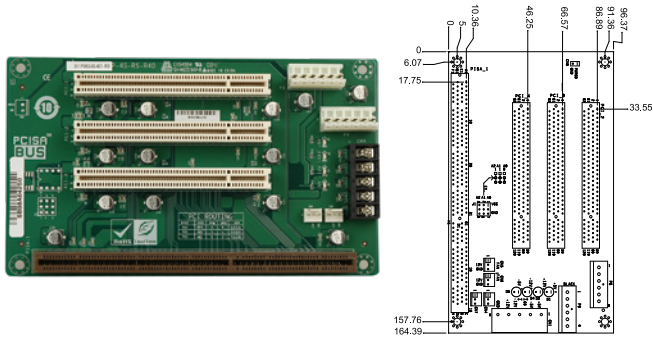
## IP-3S-RS-R40



### Ordering Information

IP-3S-RS-R40	3-slot backplane with two PCI slots
PAC-53GH	3-slot half-size compact chassis

## IP-4S-RS-R40

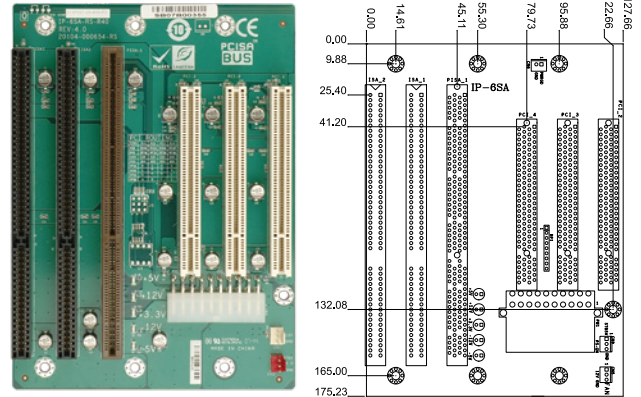


### Ordering Information

IP-4S-RS-R40 4-slot backplane with three PCI slots

## IP-6SA-RS-R40

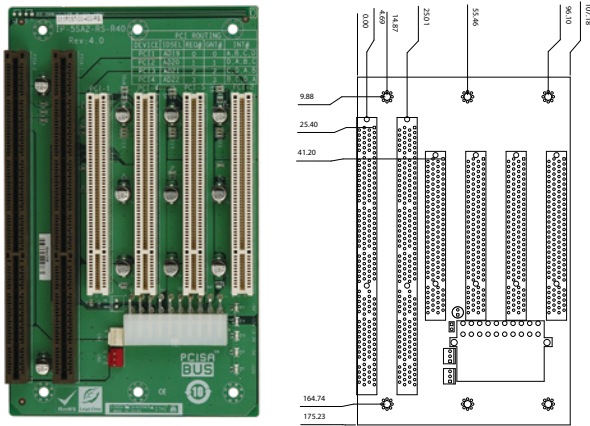
ATX power



### Ordering Information

IP-6SA-RS-R40 6-slot backplane with three PCI slots and two ISA slots  
 PAC-106G 6-slot full-size compact chassis  
 PAC-1000G 6-slot full-size compact chassis

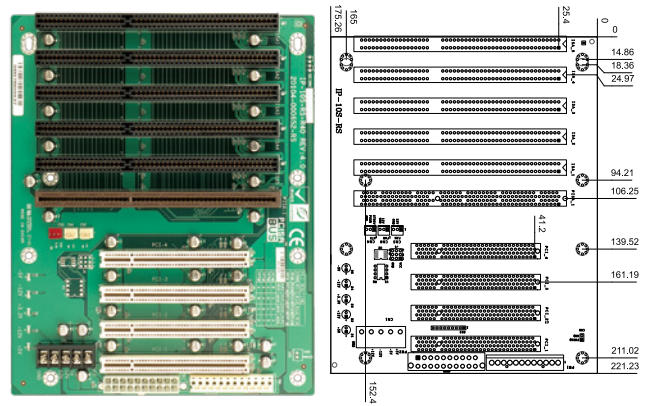
## IP-5SA2-RS-R40



### Ordering Information

IP-5SA2-RS-R40 5-slot backplane with four PCI slots  
 PR-1500G 5-slot half-size compact chassis

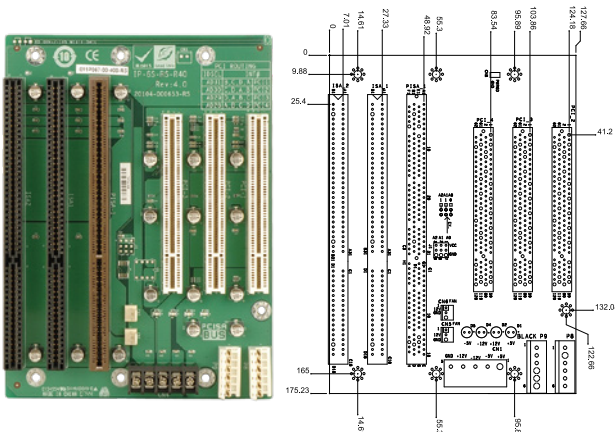
## IP-10S-RS-R40



### Ordering Information

IP-10S-RS-R40 10-slot backplane with four PCI slots and five ISA slots  
 PAC-125G 10-slot full-size compact chassis

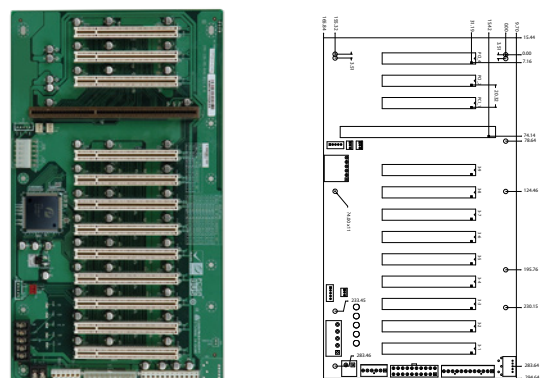
## IP-6S-RS-R40



### Ordering Information

IP-6S-RS-R40 6-slot backplane with three PCI slots and two ISA slots  
 PAC-1000G 6-slot full-size compact chassis

## IPX-13S-RS-R40



### Ordering Information

IPX-13S-RS-R40 13-slot backplane with twelve PCI slots  
 RACK-305G 4U 14-slot rack-mount chassis  
 RACK-360G 4U 14-slot rack-mount chassis  
 RACK-3000G 4U 14-slot rack-mount chassis