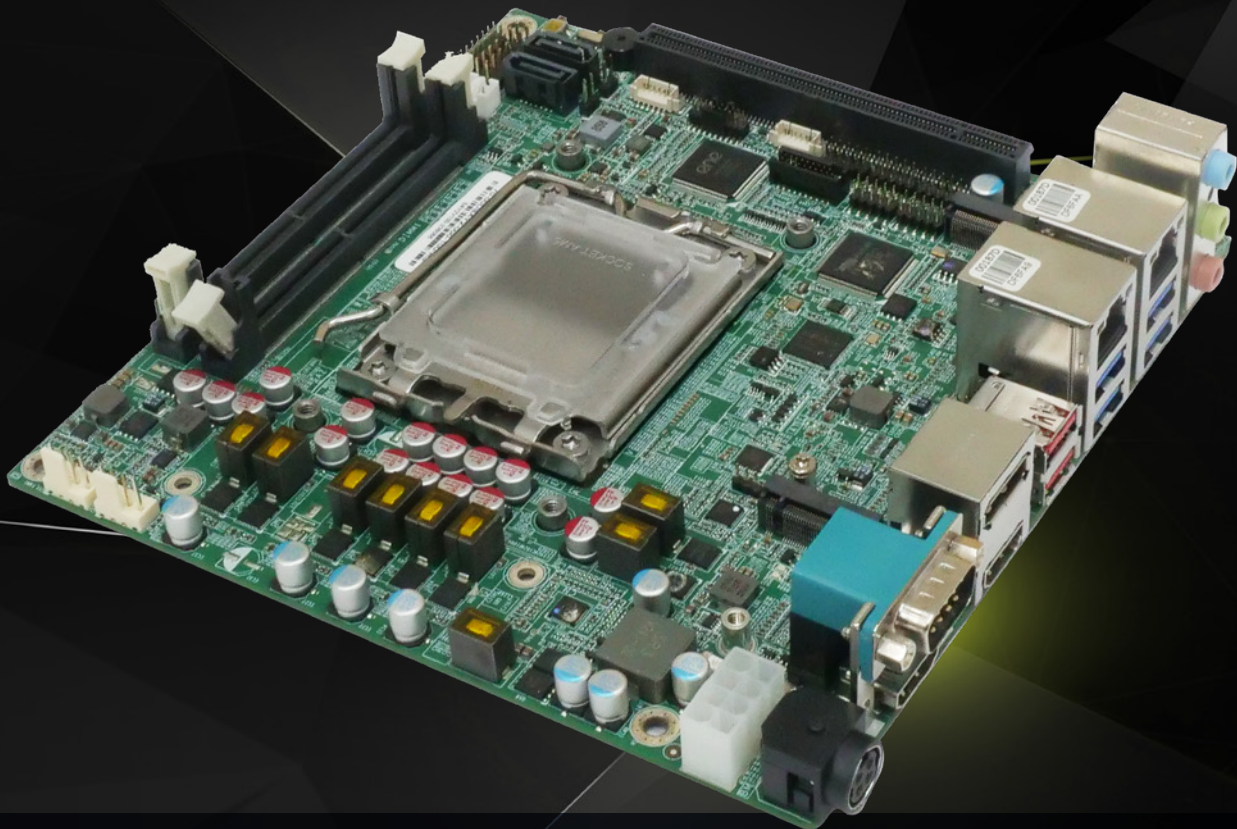


KINO-AM5

Mini-ITX SBC with AMD Ryzen™ 7000&8000G Series Desktop Processors

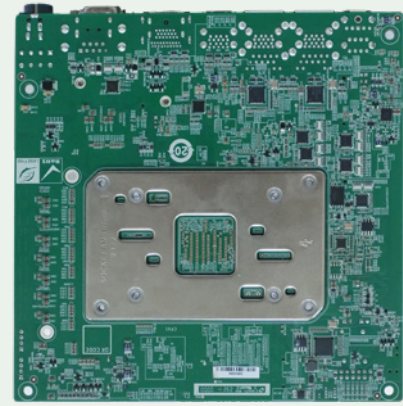
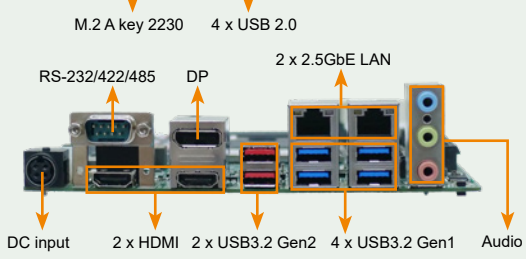
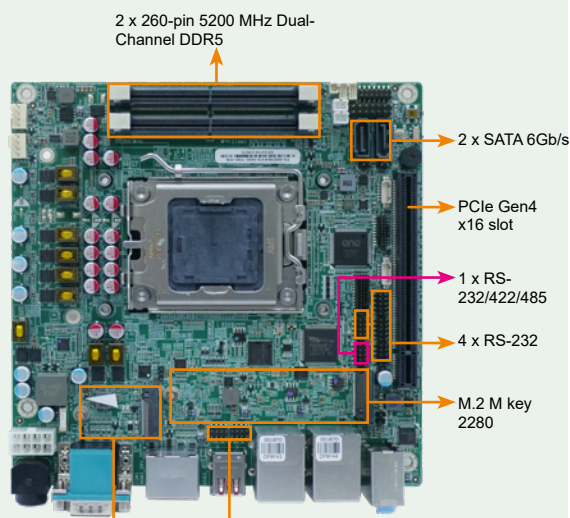
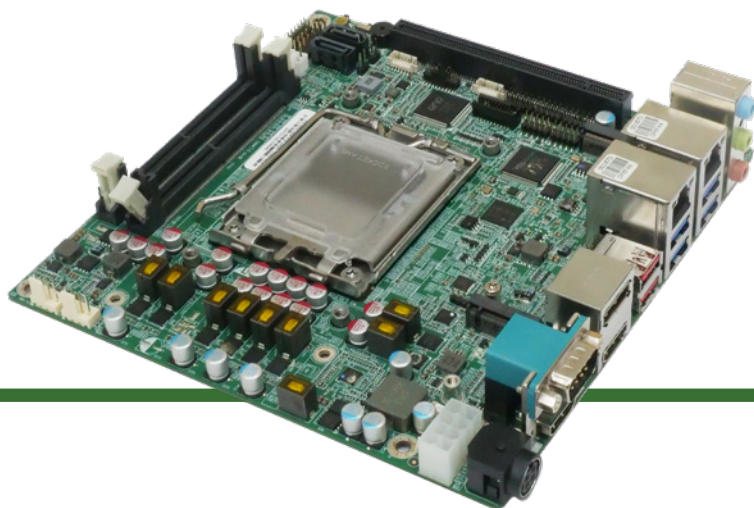
- Two 260-pin 5200 MHz Dual-Channel DDR5 SDRAM, supported up to 64GB
- Triple independent display: 1 x DP 1.4 and 2 x HDMI 2.0
- Support dual Intel® I226V 2.5GbE controllers
- Support PCIE Gen4 x16, M.2 M key and M.2 A key expansion



www.ieiworld.com

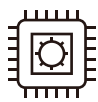
KINO-AM5

Mini-ITX SBC with AMD Ryzen™ 7000&8000G Series Desktop Processors, DDR5 SO-DIMM, Triple Display, Dual Intel® 2.5 GbE, USB3.2, M.2, RoHS



Support AMD Ryzen™ 7000&8000G Series CPU

AMD AM5 Socket for AMD Ryzen™ 7000&8000G Series Desktop Processors (up to 65W TDP CPU)



Support Dual-Channel DDR5 SO-DIMMs

Two 260-pin Dual-Channel DDR5 SDRAM Unbuffered DIMMs, supported up to 64GB, Speeds up to 5200MHz



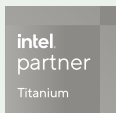
Support Intel® I226V 2.5GbE Network Controller

Two RJ45 network ports are provided via Intel® I226-V 2.5GbE network controller to achieve up to 2.5GbE network transmission rate.

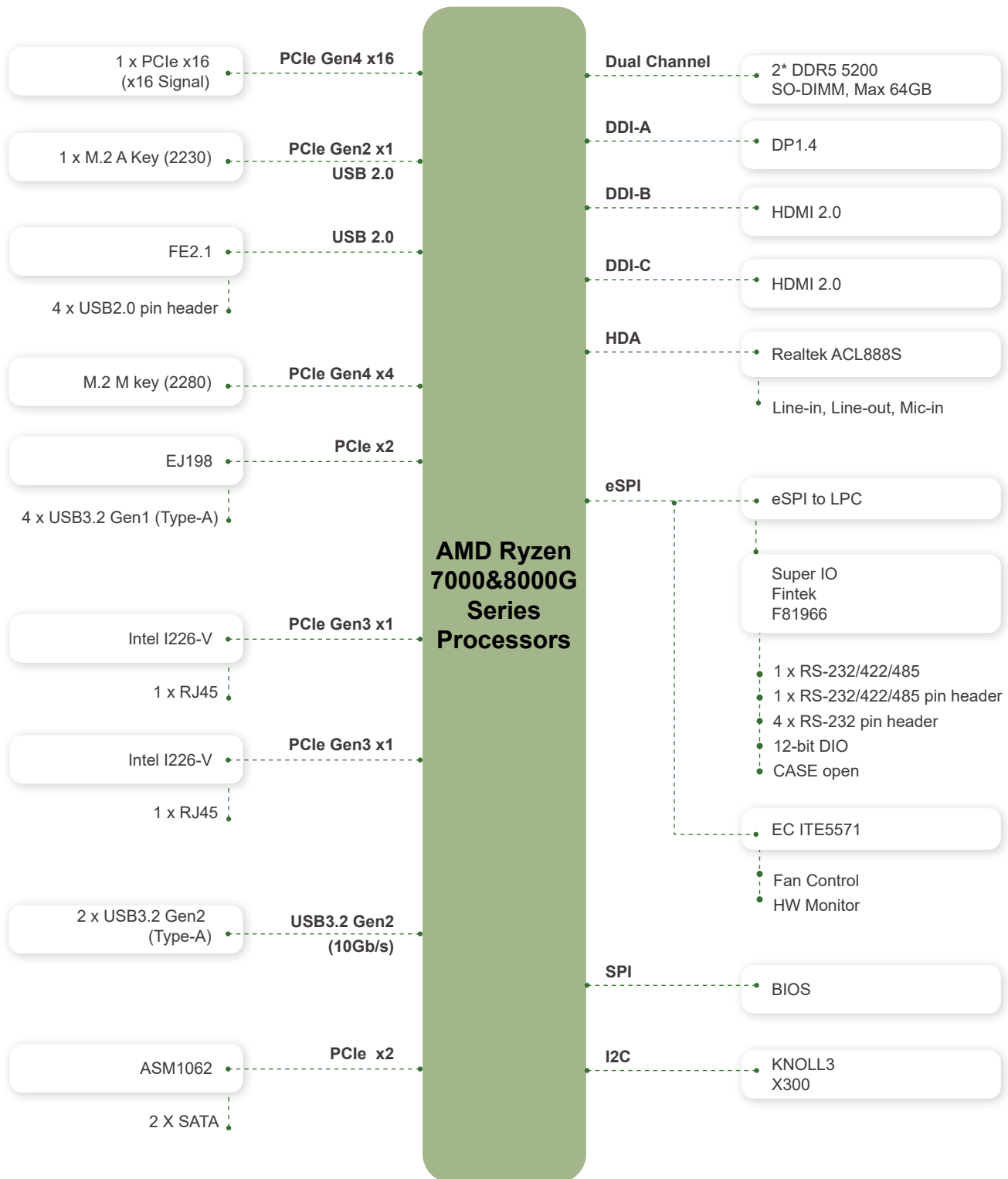


Abundant Expansion Slots

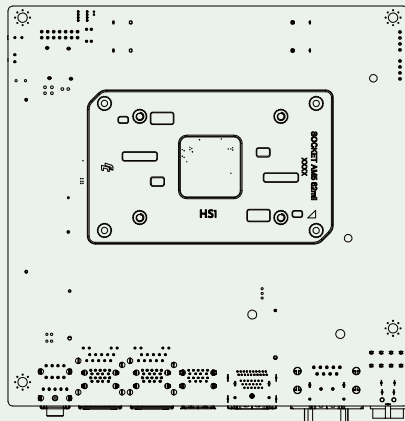
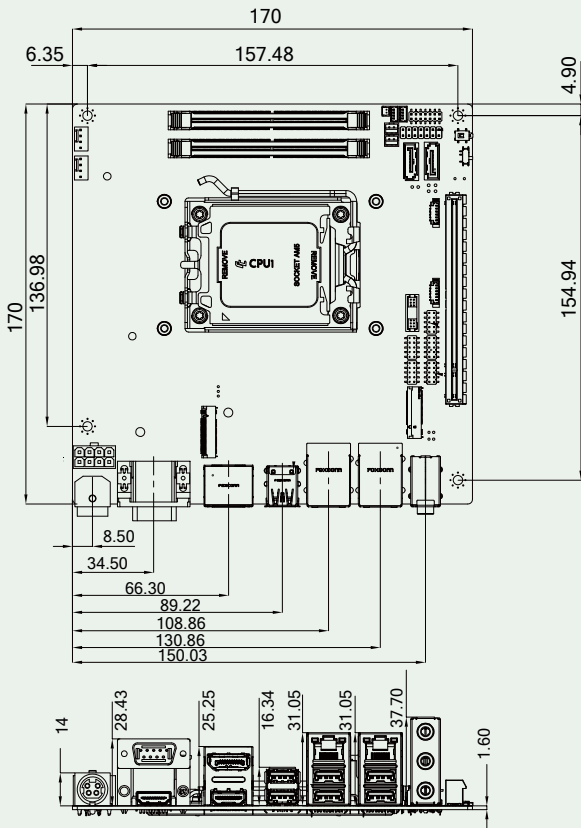
The KINO-AM5 provides PCIe x16 (Gen 4) for expansion, M.2 A key for Bluetooth and Wi-Fi modules, M.2 M key for NVME storage



Block Diagram



Dimensions



Specifications

Model	KINO-AM5
CPU	AMD AM5 Socket for AMD Ryzen™ 7000&8000G Series Desktop Processors
BIOS	UEFI AMI BIOS
Memory	Two 260-pin 5200 MHz Dual-Channel DDR5 SDRAM Unbuffered DIMMs supported up to 64GB
Graphics Engine	Integrated RDNA2 GPU
Display Output	1 x DP 1.4 (up to 4096 x 2304 @60Hz) 2 x HDMI 2.0 (up to 4096 x 2304 @60Hz)
Ethernet	LAN1: Intel I226V 2.5GbE controller LAN2: Intel I226V 2.5GbE controller
External I/O Interface	2 x USB 3.2 Gen2 (Type-A) (10Gb/s) 4 x USB 3.2 Gen1 (Type-A) (5Gb/s) 1 x RS-232/422/485
Internal I/O Interface	2 x SATA 6Gb/s 1 x RS-232/422/485 (2x5 pin, P=2.0) 4 x RS-232 (2x5 pin, P=2.0) 4 x USB 2.0 (2x4 pin, P=2.0)
I2C	1 x I2C(1x4 pin,P=1.25)
Audio	Realtek ALC888S HD Audio codec 3 x Audio jack (Line-in, Line-out, Mic-in)
Front Panel	1 x Front Panel (2 x 7 pin,P=2.54, Power LED, HDD LED, Speaker, Power Button, Reset Button)
Expansion	1 x PCIe Gen4 x16 (Slot1) with x16 Signal (Ryzen8000G PHX1 only X8 Signal, PHX2 only X4 Signal) 1 x 2280 M.2 M key (PCIe Gen3 X 4) 1 x 2230 M.2 A key (PCIe Gen3 x1 &USB 2.0) (A key will disable with Ryzen8000G PHX2)
Digital I/O	1 x 12-bit digital I/O (2x7 pin,P=2.0)
TPM	Support TPM 2.0(TPM-IN03 module)
Fan connector	1 x CPU fan connector (1x4 pin) 1 x System fan connector (1x4 pin)
Chassis open	1 x Chassis intrusion (1x2 pin)
Power Supply	Support AT/ATX mode ErP/EuP Compliant
Watchdog Timer	Software Programmable support 1~255 sec. System reset
Power Consumption	12V@13.60A (AMD Ryzen™9 7900 @3.7GHz CPU with Apacer D22.35305H.001 DDR5 5600 32G memory)
Operating Temperature	-10°C ~ 60°C
Storage Temperature	-30°C ~ 70°C
Operating Humidity	5% ~95%, non-condensing
Dimensions	170mm x 170mm
Weight	GW:1200g / NW:700g
Certification	CE/FCC Compliant

Packing List

1 x KINO-AM5 single board computer	1 x SATA cable
1 x I/O Shielding	1 x QIG

Ordering Informaiton

KINO-AM5-R10	Mini-ITX SBC with AMD Ryzen™ 7000&8000G Series Desktop Processors, DDR5 SO-DIMM, Triple Display, Dual Intel 2.5GbE, USB3.2, M.2,RoHS
--------------	--

Optional Accessories

CB-USB02A-RS	Dual port USB cable with bracket, 300mm, P=2.0
32205-000702-100-RS	RS-232 cable, 200 mm, p=2.0 mm

Optional Accessories

