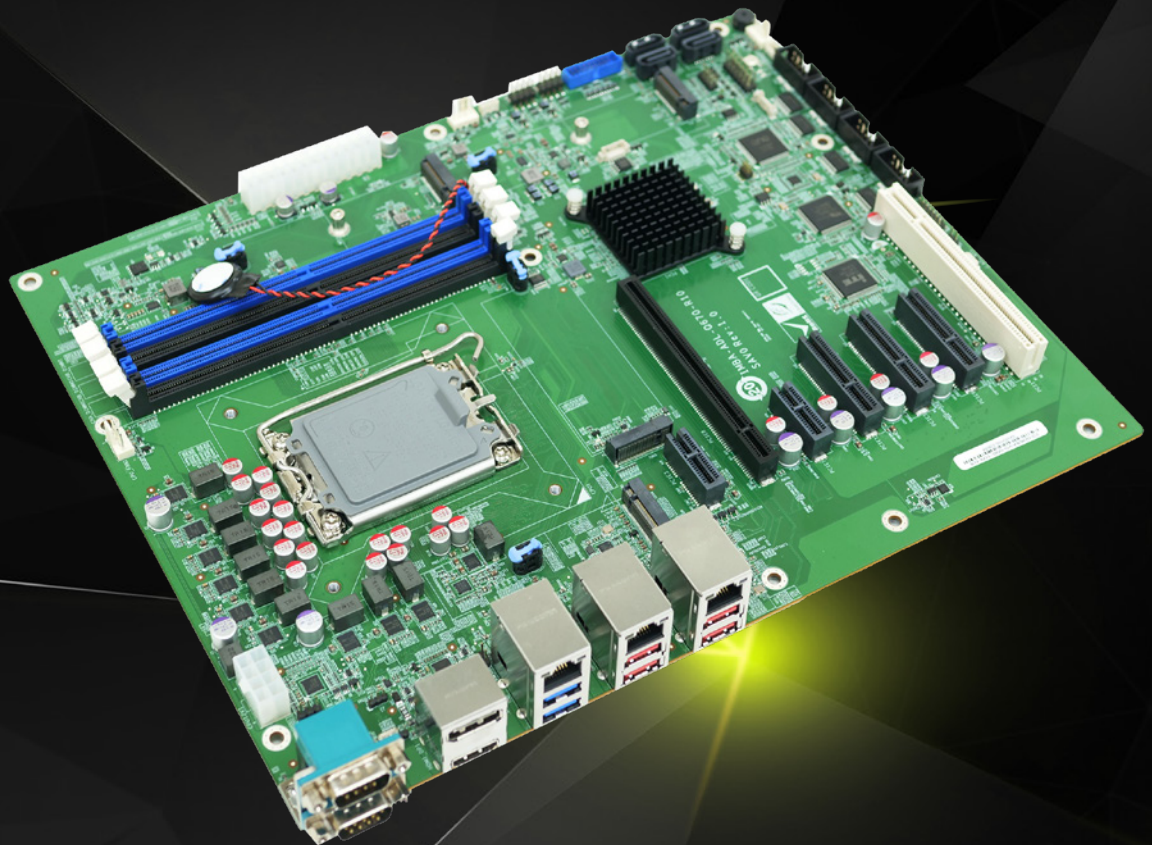


IMBA-ADL-Q670

ATX motherboard supports LGA1700 Intel® 12th/13th Generation Core™ i9/i7/i5/i3, Pentium® and Celeron® processor

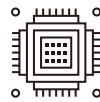
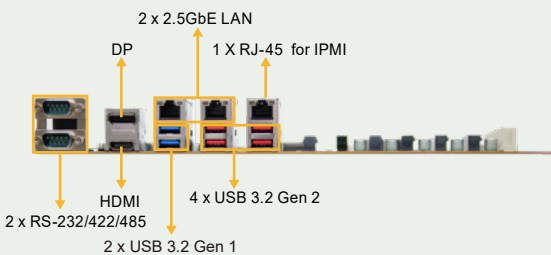
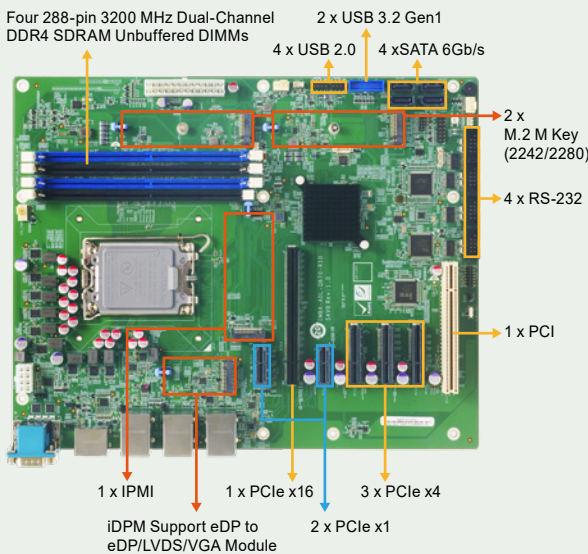
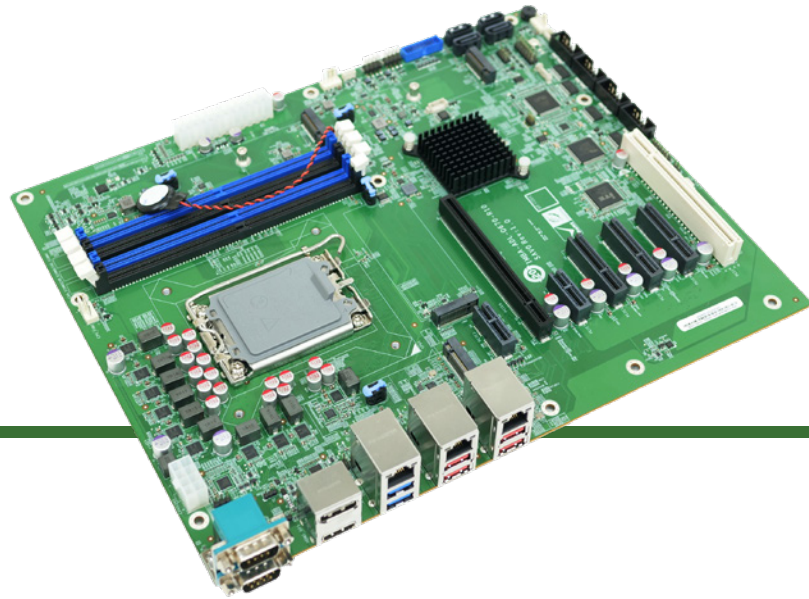
- LGA1700 Intel® 12th/13th Generation Core i9/i7/i5/i3, Pentium and Celeron processor
- Dual-channel DDR4 3200MHz
- Support DisplayPort 1.4a, HDMI&iDPM module
- Support two M.2 M keys for storage
- Support one PCIe x16, three PCIe x4, two PCIe x1, one PCI for expansions



www.ieiworld.com

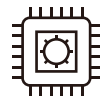
IMBA-ADL-Q670

ATX motherboard supports LGA1700 Intel® 12th/13th Generation Core™ i9/i7/i5/i3, Pentium® and Celeron® processor, DDR4, Triple independent displays, dual 2.5GbE LAN, M.2, USB 3.2, SATA 6Gb/s, IPMI, HD Audio and RoHS



Support 12th/13th Gen Intel® Core™ CPU

Support LGA1700 socket 12th/13th generation Alder Lake-S/Raptor Lake-S Intel® Core™ i9/i7/i5/i3/Pentium®/Celeron® Processor (up to 125W TDP CPU), up to 24cores/32threads for outstanding Multi Threaded performance



Support Intel® I225V/I226V 2.5GbE Ethernet Controller

Support two RJ45 network interface via Intel® I225V/I226V 2.5GbE network controller to achieve up to 2.5GbE network transmission



Rich Expansion I/O

It includes one PCIe x16, three PCIe x4, two PCIe x1 and one PCI slots for functional expansions like graphics cards, LAN cards or motion control cards



Support Four SATA for Storage

It supports 4 x SATA 6Gb/s, and RAID 0/1/5/10 supported. Otherwise, there are 2 x M.2 M key with PCIe signal support NVMe storage



IMBA-ADL-Q670 Block Diagram

