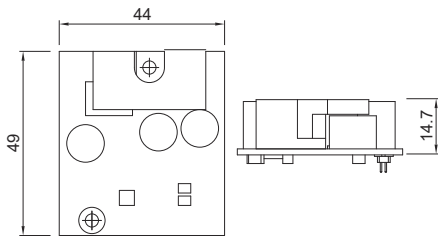


# CFM PoE Module

## CFM-PoE100

**PoE Control Function Module,  
Power Boost 50-57V**

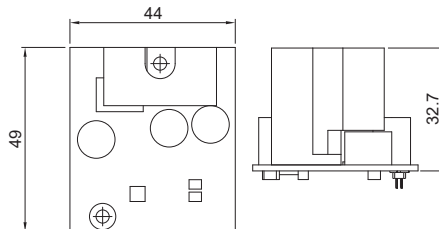
- CFM Interface
- IEEE 802.3at compliant
- Power Boost 50-57V
- Dimension (WxDxH) : 44 x 49 x 14.7 mm



## CFM-PoE101

**PoE Control Function Module,  
Power Boost 50-57V**

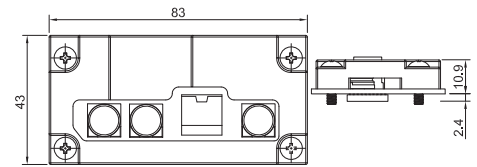
- CFM Interface
- IEEE 802.3at compliant
- Power Boost 50-57V
- Dimension (WxDxH) : 44 x 49 x 32.7 mm



## CFM-PoE01

**PoE Control Function Module,  
Power Boost 50-57V**

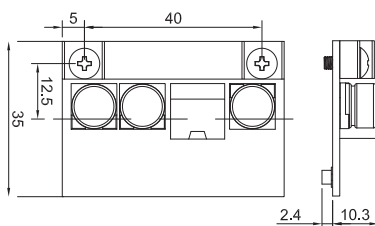
- CFM Interface
- IEEE 802.3at compliant
- Power Boost 50-57V
- Dimension (WxDxH) : 83 x 43 x 10.9 mm



## CFM-PoE02

**PoE Control Function Module,  
Power Boost 50-57V**

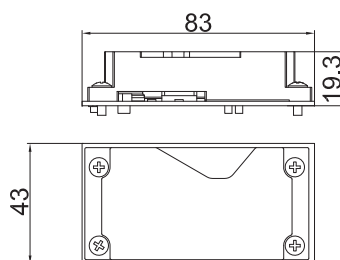
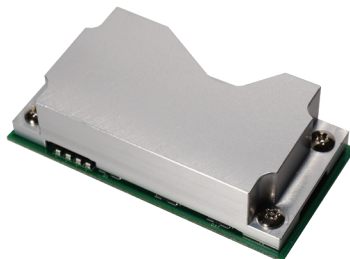
- CFM Interface
- IEEE 802.3at compliant
- Power Boost 50-57V
- Dimension (WxDxH) : 40 x 35 x 10.3 mm



## CFM-PoE03

**PoE Control Function Module,  
Power Boost 50-57V**

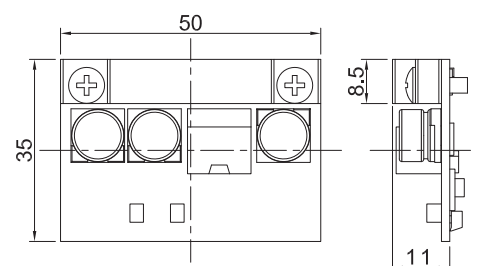
- CFM Interface
- IEEE 802.3at compliant
- Power Boost 50-57V
- Dimension (WxDxH) : 83 x 43 x 19.3 mm



## CFM-PoE04

**PoE Control Function Module,  
Power Boost 50-57V**

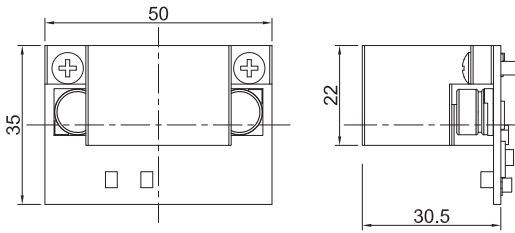
- CFM Interface
- IEEE 802.3at compliant
- Power Boost 50-57V
- Dimension (WxDxH) : 50 x 35 x 11 mm



**CFM-PoE05**

**PoE Control Function Module,  
Power Boost 50-57V**

- CFM Interface
- IEEE 802.3at compliant
- Power Boost 50-57V
- Dimension (WxDxH) : 50 x 35 x 30.5 mm



## Compatible List

Model No.	CFM-PoE100	CFM-PoE101	CFM-PoE01	CFM-PoE02	CFM-PoE03	CFM-PoE04	CFM-PoE05
P1101				V			
P2002	V						
P2002E		V					
P2102						V	
P2102E							V
DA-1100				V			
DX-1000			V				
DX-1100			V				
DS-1100 Series					V		
DS-1200 Series					V		
DS-1300 Series					V		
DC-1200				V			
GM-1000			V				
GP-3000			V				

**V : Compatible**

## Ordering Information

Model No.	Description
CFM-PoE100	PoE Control Function Module, Individual port 25.5W
CFM-PoE101	PoE Control Function Module, Individual port 25.5W
CFM-PoE01	PoE Control Function Module, Individual port 25.5W
CFM-PoE02	CFM Module with PoE Control Function, Individual Port 25.5W
CFM-PoE03	CFM Module with PoE Control Function, Individual Port 25.5W
CFM-PoE04	CFM Module with PoE Control Function, Individual Port 25.5W
CFM-PoE05	CFM Module with PoE Control Function, Individual Port 25.5W